



**Brüel & Kjær Vibro**

A member of the NSK Group

# B&K vibro

Product specifications and ordering information

## **VC-8000**

Temperature Monitoring Module - TMM

Copyright © 2022 Brüel & Kjær Vibro GmbH

All rights to this technical documentation remain reserved.

Any corporeal or incorporeal reproduction or dissemination of this technical documentation or making this document available to the public without prior written approval from Brüel & Kjær Vibro GmbH shall be prohibited. This also applies to parts of this technical documentation.

Product specifications and ordering information **VC-8000 Temperature Monitoring Module - TMM**,  
S1077788.002 / V05, en, date of issue: 18.05.2022

**Brüel & Kjær Vibro GmbH**

Leydheckerstrasse. 10  
64293 Darmstadt  
Germany

Phone: +49 6151 428 0  
Fax: +49 6151 428 1000

**Hotline**

Phone: +49 6151 428 1400  
E-Mail: support@bkvibro.com

**Brüel & Kjær Vibro A/S**

Lyngby Hovedgade 94, 5 sal  
2800 Lyngby  
Denmark

Phone: +45 69 89 03 00  
Fax: +45 69 89 03 01

**Homepage**

[www.bkvibro.com](http://www.bkvibro.com)

**BK Vibro America Inc**

1100 Mark Circle  
Gardnerville NV 89410  
USA

Phone: +1 (775) 552 3110

**Corporate E-Mail**

[info@bkvibro.com](mailto:info@bkvibro.com)

## Table of Contents

<b>Overview</b> .....	<b>4</b>
<b>Features and Benefits</b> .....	<b>5</b>
<b>Specifications</b> .....	<b>6</b>
<b>Ordering Information</b> .....	<b>10</b>
Temperature Monitoring Module (TMM) .....	10
<b>Accessories</b> .....	<b>11</b>
External Termination Resistor (ETR).....	11
Manuals and Software.....	11
USB Cable.....	11
<b>Wiring and Outline Diagrams</b> .....	<b>12</b>



## Overview

The Temperature Monitoring Module (TMM) accepts from one to six 2-, 3-, and 4-wire RTDs and/or thermocouples (both grounded and ungrounded tip) in any combination and provides six channels of temperature monitoring. It also accepts 4-20mA process variable signals. Multiple temperature channels can be grouped for differential and/or average measurements and alarming.

The module occupies a single slot in a SETPOINT® monitoring system rack and uses 24 Vdc instrument power as supplied by the SETPOINT® Rack Connection Module (RCM). Each TMM provides all necessary power<sup>1</sup>, signal conditioning, alarm comparison, and relay<sup>2</sup> logic functions needed to provide six channels of continuous machinery monitoring and protection. It complies with the requirements of American Petroleum Institute Standard 670 for monitoring systems and is completely configurable using SETPOINT® configuration software.

Up to 15 TMM cards can reside in a single 19" SETPOINT® rack, providing up to 90 channels of continuous machinery protection. Each module provides basic status indication for its channels as required by API 670. When used with the optional rack touchscreen, real time display of temperature values, alarm statuses, and other information is available for all channels concurrently on a single screen for “at a glance” convenience.

When ordered with optional condition monitoring capabilities, the module streams high-speed (500 ms update rate) data to the rack’s System Access Module (SAM) where it is available to condition monitoring software such as SETPOINT® CMS and/or the rack’s embedded high-speed “flight recorder” on SD Card or Solid State Drive.



### NOTES:

1. TMM process variable channels accept 4-20mA and 0-1.5Vdc signal formats only and do not provide loop power; UMMs accept a wider variety of process variable formats and also provide loop power. See UMM datasheet S1077787.
2. Each TMM has 4 SPDT relays (not one relay per channel).

## Features and Benefits

- **Highly reliable design** utilizes just three transitional connectors from signal input to relay output – significantly reducing possible failure points in the critical machinery protection path.
- **Individually programmable 4-20mA outputs** – each of the six 4-20mA outputs on a TMM can be assigned to any parameter from any channel on that TMM.
- **Four SPDT electro-mechanical relays** on each TMM – can be voted with other channels whether in the same or different rack modules.
- **Flexible signal conditioning** – each TMM channel can be individually configured for RTD, thermocouple, or process variable inputs\*. Temperature channels can be grouped and configured to return additional measurements such as pair differential, differential from group, and group average – any or all of which can be used for alarming.
 

\* TMM process variable channels do not provide loop power, accept only 4-20mA or 0-1.5Vdc signal formats, and require a special 68-ohm External Termination Resistor (p/n 100543) when 4-20mA inputs are used. See page 6 for additional details regarding the ETR. UMM process variable channels provide 24Vdc loop power, do not require a termination resistor, and accept a wider range of proportional signal formats (4-20 mA, +1 to +5 Vdc, 0 to -10 Vdc, and 0 to +5 Vdc). Refer to UMM datasheet S1077787 for additional information.
- **Distributed power regulation for improved reliability** – each TMM converts its 24 Vdc input power to all regulated voltages needed by on-board processors and transducers, reducing the potential for rack single-point failures compared to systems that generate regulated voltages for the entire rack in a centralized power supply.
- **No jumpers or DIP switches.** Every option in the SETPOINT® system is configured via software. Cards do not have to be removed from the rack.
- **Powerful onboard processor** delivers 24-bit A-to-D resolution for highly accurate measurements – no potentiometers, no drift, no calibration required.
- **Simple, reliable, self-contained design** reduces likelihood of failures from inter-module dependencies.
- **Digital Modbus® communications** via System Access Module (SAM) can be used in lieu of (or simultaneously with) analog 4-20 mA outputs for flexibility when integrating with other instrumentation.
- **Unparalleled ease of configuration** via SETPOINT® configuration software's intuitive spreadsheet-like user interface – easily cut and paste to/from Microsoft® Excel® and most other programs.
- **Simplified spare parts requirements.** Because every measurement in the SETPOINT® system is made with just two monitoring types (UMMs and TMMs), only two module types need to be carried as spares. For systems without temperature measurements, only a single monitoring module type is used.
- **Connectivity to condition monitoring software.** When ordered with condition monitoring enabled, a TMM becomes a TMMCM and is able to stream high-speed (500 ms update rate) data to the rack's System Access Module (SAM) where it can be stored on an embedded "flight recorder" hard drive and/or SD Card, or to an external computer or OSIsoft® PI System server. The data can then be viewed with our SETPOINT® CMS Display software.
- **SIL-Capable Architecture** SETPOINT® is suitable for use as part of a SIS, to implement safety instrumented functions up to SIL 2 when configured, installed and commissioned properly as per instructions provided within the Operations and Maintenance Manual (S1079330) and safety manuals (C107577, C107576, C107578, C107579).



## Specifications

All specifications are at +25 °C (+77° F) unless otherwise noted.

Inputs	
<b>Channels</b>	Six
<b>Transducer Types</b>	<p>Accepts most common industry-standard resistance temperature detectors (RTDs), thermocouples, and 4-20mA or 0-1.5Vdc signals in any combination.*</p> <p>* All channels within a TMM share the same ground. If grounded tip thermocouples are used with different ground potentials from one another, use separate TMMs for each ground potential required.</p>
<b>Thermocouples</b>	
<b>Type</b>	<b>Range</b>
Type E	-100 to +1000 C
Type J	0 to +760 C
Type K	0 to +1370 C
Type T	-160 to +400 C
<b>2-, 3-, and 4-wire RTDs</b>	
<b>Type</b>	<b>Range</b>
10 Ω Copper (α = 0.00427)	-100 to +260C
100 Ω Copper (α = 0.00427)	-100 to +260C
120 Ω Nickel (α = 0.00672)	-80 to +260C
100 Ω Platinum (α = 0.00385)	-200 to +850C
100 Ω Platinum (α = 0.00392)	-200 to +700C

	<b>Externally Powered Process Variable Transmitters</b>
	Current: 4-20 mA Voltage: < 1.5Vdc
<b>Wire Sizes</b>	16-28 AWG
<b>Isolation</b>	565 V pk (400 V rms) (Module-to-Chassis)
<b>Zin</b>	> 1 MΩ
<b>Input Power Voltage</b>	<ul style="list-style-type: none"> <li>• Continuous: + 22 to +30 Vdc (SIL: +23.1 to +26 Vdc)</li> <li>• Transient: +18 to + 36 Vdc</li> </ul>
<b>Power Consumption</b>	≤ 7W when input power voltage is 22 to 26 Vdc.

Outputs	
<b>Relays</b>	<ul style="list-style-type: none"> <li>• Number: 4 per TMM</li> <li>• Type: SPDT, form C</li> <li>• Sealant: epoxy</li> <li>• Min. Switched Current: 10 mA</li> <li>• Max switched pwr (resistive): 5A @ 48 Vrms or 30 Vdc</li> <li>• Maximum voltage in hazardous areas: 30 Vdc</li> <li>• Life: &gt; 10,000 cycles</li> <li>• Wire size: 14-28 AWG</li> <li>• Software-configurable options:                             <ul style="list-style-type: none"> <li>○ Energize or de-energize to trip</li> <li>○ 4 SPDT or 2 “virtual” DPDT</li> <li>○ Can be driven by alarm condition(s) of any channel(s) in the rack via user-programmable logic</li> <li>○ Any logic driving a relay can be configured for latching or non-latching operation</li> </ul> </li> </ul>
<b>LEDs</b>	<ul style="list-style-type: none"> <li>• OK LED (1 per TMM)                             <ul style="list-style-type: none"> <li><b>Green</b> – monitor operating correctly</li> <li><b>Yellow</b> – one or more channels are faulted</li> <li><b>Red</b> – fatal hardware error</li> <li><b>Off</b> – monitor has lost power</li> </ul> </li> <li>• Bypass LED (1 per TMM)                             <ul style="list-style-type: none"> <li><b>On</b> – one or more channels bypassed</li> <li><b>Off</b> – No channels bypassed</li> </ul> </li> <li>• Relay LEDs (1 per relay)                             <ul style="list-style-type: none"> <li><b>On</b> – Relay in alarm state</li> <li><b>Off</b> – Relay not in alarm state</li> </ul> </li> </ul>

<b>4-20 mA</b>	<ul style="list-style-type: none"> <li>• Number: 6 (1 per channel)</li> <li>• Output proportional to channel programmable full scale range</li> <li>• Overrange: up to 125% of full scale (24 mA)</li> <li>• Max Load Resistance (R<sup>L</sup>): 950Ω with 22 Vdc power; 1350Ω with 30 Vdc power</li> <li>• Resolution: 16 bit</li> <li>• Update Rate: &lt; 500 ms</li> <li>• Short-circuit protected: Yes</li> <li>• Wire size: 16-28 AWG*</li> <li>• Fault Clamp: Programmable**</li> </ul> <p>* Connector accepts physical wire diameters from 16-28 AWG. Appropriate AWG for the application will vary depending on total cable length (resistance and capacitance). Consult manual S1079330. ** The fault clamp value can be individually programmed for each channel as either 2 mA or a user-selected value within the full-scale range.</p>
Configuration	
<b>Method</b>	PC-based SETPOINT® configuration software
<b>Connection Type</b>	Local: Mini-B USB “on-the-go” receptacle on UMM*
	* When a System Access Module (SAM) is installed in the rack, the USB receptacle on any TMM or UMM can be used to configure every module in the rack.
<b>Memory Location</b>	Configuration data is stored in non-volatile RAM on each TMM and is retained until changed. Batteries or other power sources are not required to maintain a module’s configuration data.



Signal Conditioning	
<b>A/D Resolution</b>	24 bits
<b>Precision</b>	± 1° C
<b>Accuracy</b>	± 3° C (Ta = 25° C)
Alarms	
<b>Types</b>	Individual over and under Alert and Danger setpoints can be established for each channel. Alarming is selectable for Over, Under, In Band, or Out of Band. * A channel may be configured with any or all of its alarms turned off.
<b>Configurable Settings</b>	Time Delay
	<ul style="list-style-type: none"> <li>Individually adjustable per alarm, per channel.</li> <li>Minimum Delay: 1 sec</li> <li>Maximum Delay: 100 sec</li> <li>Adj. Increments: 0.5 sec</li> </ul>
	Latching / Non-latching
	Alert and Danger setpoints are individually configurable per alarm, per channel for latching or non-latching
	Range
<ul style="list-style-type: none"> <li>Individually adjustable, per alarm, per channel</li> <li>Minimum: 0% of full scale</li> <li>Maximum: 100% of full scale*</li> <li>Adj. increments: 2 decimal points of precision, in the channel's engineering units</li> </ul> <p>* A channel's Alert setpoint must be less than its corresponding Danger setpoint.</p>	
	Enable/Disable
	Any or all alarms for a channel may be enabled or disabled individually, allowing operation without setpoints (or with a reduced number of setpoints).

Environmental	
<b>Operating Temperature</b>	-20 °C to +65 °C
<b>Storage Temperature</b>	-40 °C to +85 °C
<b>Operating Temperature Ramp</b>	Do not exceed 0.5C/minute
<b>Storage Temperature Ramp</b>	Do not exceed 10C/minute
<b>Humidity</b>	5% to 95%, non-condensing
CE Mark Directive	
<b>ESD</b>	<ul style="list-style-type: none"> <li>Contact: 6 kV, Criteria B</li> <li>Air: 8 kV, Criteria B</li> </ul>
<b>Radiated EMI Susceptibility</b>	<ul style="list-style-type: none"> <li>80 – 1000 MHz: 20 V/m*</li> <li>1.4 – 2 GHz: 6 V/m*</li> <li>2 – 2.7 GHz: 3 V/m*</li> </ul> <p>* Criteria A</p>
<b>Magnetic Field</b>	30 A/m, Criteria A
<b>EFT Burst</b>	2 kV, Criteria B
<b>EFT Surge (Signal Lines, Power Line)</b>	2 kV line to ground, Criteria B
<b>Conducted RFI (Signal Lines, Power Lines)</b>	150 kHz to 80 MHz, Criteria A
<b>Conducted RF Common Mode Immunity (Signal Lines, Power Lines)</b>	<ul style="list-style-type: none"> <li>15 Hz – 150 Hz: 10 V*</li> <li>150 Hz – 1.5 kHz: 1V*</li> <li>1.5 kHz – 150 kHz: 10 V*</li> </ul> <p>* Criteria A</p>
<b>Radiated EMI Emissions</b>	30 dB µV/m @ 30 m, 30 MHz – 1000 MHz, Class A
<b>Conducted Emission</b>	60 dB µV/m @ 30 m, 0.5 MHz – 30 MHz, Class A
<b>AC Power Voltage Dip Immunity</b>	One-half period, 30% reduction, Criteria B
<b>AC Power Voltage Dip Interruption</b>	250 periods, 95% reduction, Criteria B



<b>DC Power Voltage Dip Immunity</b>	<ul style="list-style-type: none"> <li>10 ms, 60% reduction, Criteria B</li> </ul>
<b>DC Power Voltage Dip Interruption</b>	<ul style="list-style-type: none"> <li>30 ms, 100% reduction, Criteria B</li> </ul>
<b>Low Voltage Directive</b>	Council Directive 2014/35/EU Low voltage using BK Vibro-supplied power supply (rack ordering option –CC) or other Low Voltage Directive approved supply.

**Hazardous Area Approvals**

Minden, NV 89423 USA | www.setpointvibration.com

**Ex** ATEX: II 3 G Ex nA nC IIC 160°C(T3) Gc; ITS15ATEX48339X; IECEX: Ex nA nC IIC 160°C(T3) Gc; IECEX ETL 17.0045X;

**UL** US: Class I, Zone 2, AEx nA nC IIC T3 Gc; Class I, Division 2, Groups A, B, C, D, T3C; Conforms to ANSI/UL STD. 61010-1, UL STDs. 60079-15 & 60079-0

**Intertek** CANADA: Ex nA nC IIC T3 Gc; Class I, Division 2, Groups A, B, C, D, T3C; Certified to CAN/CSA STD. C22.2 Nos. 61010-1-12, 60079-0, 60079-15 & 213-M1987

Input: V<sub>MN</sub> = 18V; V<sub>MAX</sub> = 36V; P<sub>MAX</sub> = 160W  
See User Manual  
Operating Temp.: -20°C ≤ T<sub>A</sub> ≤ 65°C  
Relay: V<sub>MAX</sub> = 30VDC; I<sub>MAX</sub> = 5A

**PART NUMBER:**  
VC-8000/RCK

**Recommended Passive Intrinsic Safety Barriers**

<b>MTL 760(ac) or equal</b>	<ul style="list-style-type: none"> <li>Thermocouples</li> </ul>
<b>MTL 755 or equal</b>	<ul style="list-style-type: none"> <li>RTDs</li> </ul>
<b>MTL 787+ or equal</b>	<ul style="list-style-type: none"> <li>4-20 mA signals</li> </ul>

**Recommended Active Intrinsic Safety Barriers with Galvanic Isolation<sup>n</sup>**

<b>Pepperl + Fuchs KFD2-VR-Ex1.50M or equal</b>	<ul style="list-style-type: none"> <li>Thermocouples</li> </ul>
<b>MTL 5582B MTL 4582B or equal</b>	<ul style="list-style-type: none"> <li>RTDs</li> </ul>
<b>Pepperl + Fuchs KFD0-CS-Ex1.50P or equal</b>	<ul style="list-style-type: none"> <li>4-20 mA</li> </ul>

Physical	
<b>Size</b>	9.1" H x 9.0" D x 1.0" W (231 mm x 229 mm x 25 mm)
<b>Weight</b>	12.1 oz (343 g)
<b>Rack Slots Required</b>	One (may reside in rack slots 3-16)

**Safety Integrity Level (SIL) Capability**

SETPOINT® is suitable for use as part of a SIS, to implement safety instrumented functions up to SIL 2 when configured, installed and commissioned properly as per instructions provided within the Operations and Maintenance Manual (doc S1079330) and safety manuals

- VC-8000 Backplane and Rack Safety Manual (C107579)
- RCM Safety Manual (C107578)
- TMM Safety Manual (C107576)
- UMM Safety Manual (C107577)



## Ordering Information

### Temperature Monitoring Module (TMM)

When ordering spare TMM cards, use the part number below. When ordering one or more TMMs as part of a system, do not order TMM cards and other rack components individually. Instead, order using part number VC-8000/RCK and refer to SETPOINT® system datasheet S1077785 to specify rack size, module types for each slot, faceplate, touchscreen, mounting style, and other options.



**C106822.001**

**VC-8000/TMM-00-05 Temperature Monitoring Module (ATEX, IEC, ETLc)**

**C107398.001**

**VC-8000/TMM-00-07 Functional Safety Temperature Monitoring Module (ATEX, IEC, ETLc)**

**C106820.001**

**Temperature Monitoring Module Condition Monitoring License\***

\* Ordered separately; required for condition monitoring functionality.



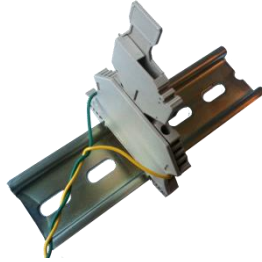
### CAUTION

TMM cards are shipped with default factory configuration settings which are not necessarily suitable for any particular application. Before use, each TMM channel must be configured properly for the application via SETPOINT® configuration software. This software is included with each system or TMM ordered and is also available for download at [www.setpoint.bkvibro.com](http://www.setpoint.bkvibro.com)

## Accessories

### External Termination Resistor (ETR)

An ETR is required when connecting a 4-20mA signal to a TMM channel, converting the proportional current to a TMM-compatible voltage level. The ETR is a 68-ohm ¼ W resistor inside a Weidmuller component holder, providing wiring terminals and 35mm DIN rail mounting (wire and DIN rail not included; shown in photo for clarity only).



**C107218.001**

**External Termination Resistor for Process Variable Channel**

## Manuals and Software

A complete set of VC-8000 manuals and configuration software on USB memory stick is supplied at no extra charge with each order, but must be specified at time of ordering. If you need the instructions in other languages than available on the website please contact us.

NOTE: Manuals are published electronically in Adobe® PDF\* format and may be printed and freely distributed. Adobe Reader is required and can be downloaded free-of-charge from [www.adobe.com](http://www.adobe.com).

**C106547.001**

**VC-8000 Manual and Configuration Software**

### USB Cable

This cable is used to connect a computer running VC-8000 Configuration Software to the USB port on UMM and TMM modules. The cable is included with part number VC-8000/CSW and does not need to be ordered separately. Order the item below only when replacing a lost or damaged cable.



**C106613.001**

**2m (6') USB 2.0 A / Mini-B Cable**



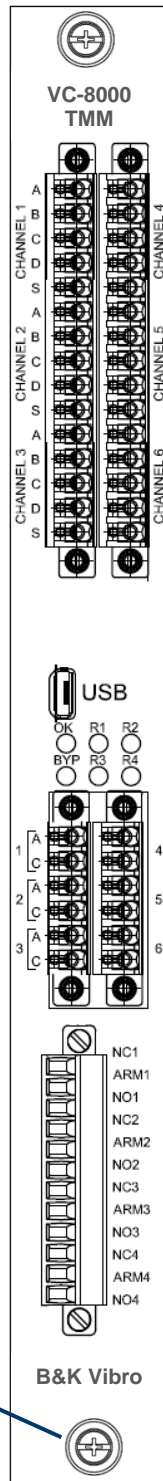
## Wiring and Outline Diagrams

Sensor input connections for channels 1-3 and 4-6. Connectors are removable to facilitate ease of wiring.

Mini-B USB receptacle for connection to SETPOINT configuration software via USB cable.

4-20 mA proportional analog output connections; programmable. Connectors are removable to facilitate ease of wiring.

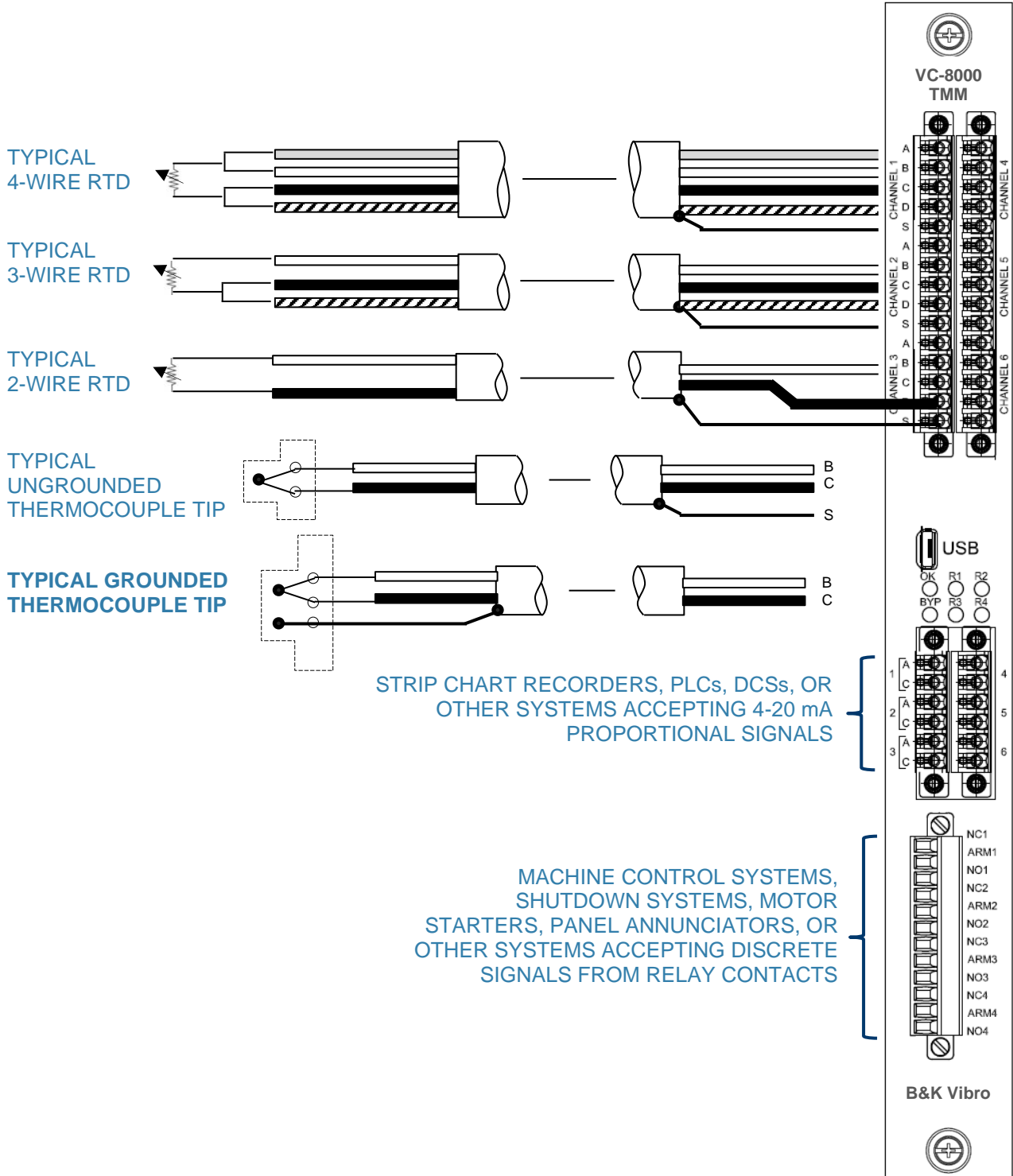
Captive thumbscrew for securing UMM in SETPOINT rack slot.

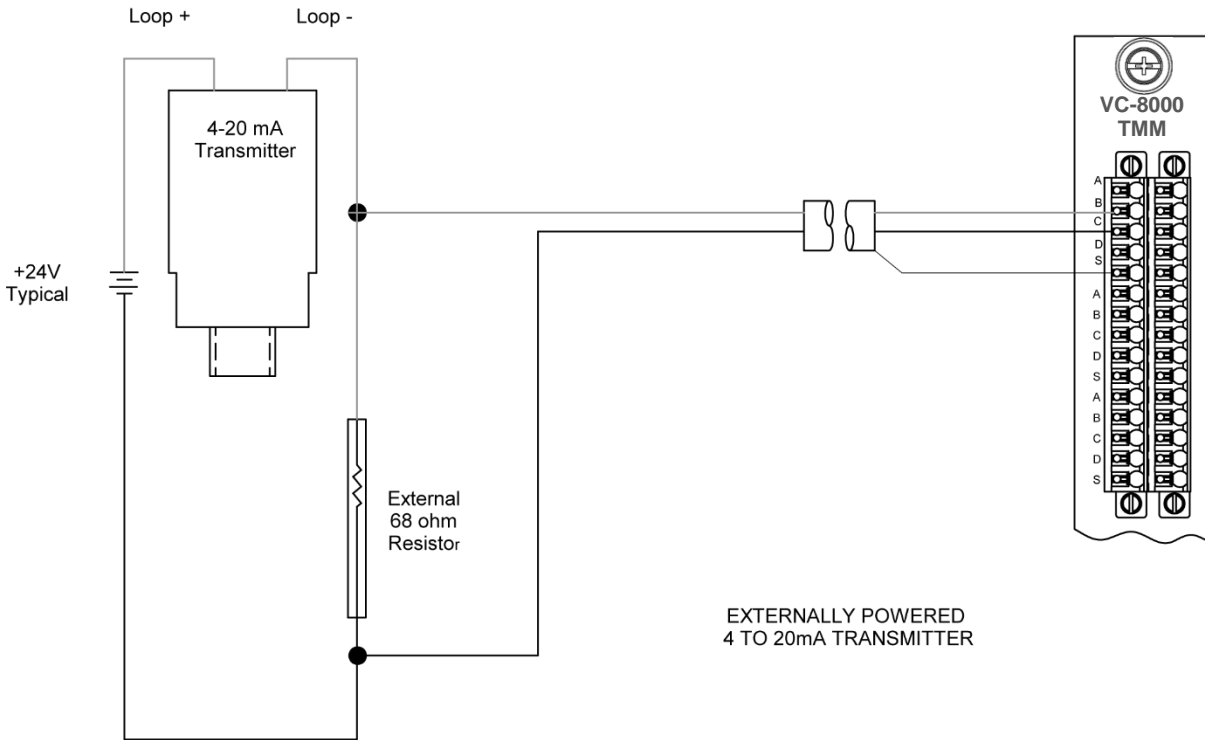


Captive thumbscrew for securing TMM in SETPOINT rack slot.

OK, BYPASS, and Relay status LEDs.

Mechanical relay output connections for relays 1-4. Connector is removable to facilitate ease of wiring.







# Contact

## **Brüel & Kjær Vibro GmbH**

Leydheckerstrasse 10  
64293 Darmstadt  
Germany

Phone: +49 6151 428 0  
Fax: +49 6151 428 1000

Corporate E-Mail: [info@bkvibro.com](mailto:info@bkvibro.com)

## **Brüel & Kjær Vibro A/S**

Lyngby Hovedgade 94, 5 sal  
2800 Lyngby  
Denmark

Phone: +45 69 89 03 00  
Fax: +45 69 89 03 01

Homepage: [www.bkvibro.com](http://www.bkvibro.com)

## **BK Vibro America Inc**

1100 Mark Circle  
Gardnerville NV 89410  
USA

Phone: +1 (775) 552 3110