



Brüel & Kjær Vibro



Release Notes

VC-8000 Machinery Protection System

MPS 2019 SP1

Trademarks and Copyrights

All trademarks, service marks, and/or registered trademarks used in this document belong to BK Vibro America Inc., except as noted below:

OSIsoft, the OSIsoft logo and logotype, Managed PI, OSIsoft Advanced Services, OSIsoft Cloud Services, OSIsoft Connected Services, PI ACE, PI Advanced Computing Engine, PI AF SDK, PI API, PI Asset Framework, PI Audit Viewer, PI Builder, PI Cloud Connect, PI Connectors, PI Vision, PI Data Archive, PI DataLink, PI DataLink Server, PI Developer's Club, PI Integrator for Business Analytics, PI Interfaces, PI JDBC driver, PI Manual Logger, PI Notifications, PI ODBC, PI OLEDB Enterprise, PI OLEDB Provider, PI OPC HDA Server, PI ProcessBook, PI SDK, PI Server, PI Square, PI System, PI System Access, PI Visualization Suite, PI Web API, PI WebParts, PI Web Services, RLINK and RtReports are all trademarks of OSIsoft, LLC.

Trademarks used herein are the property of their respective owners.

Data and specifications are subject to change without notice.

Copyright © 2021 Brüel & Kjær Vibro GmbH

All rights to this technical documentation remain reserved.

Any corporeal or incorporeal reproduction or dissemination of this technical documentation or making this document available to the public without prior written approval from Brüel & Kjær Vibro GmbH shall be prohibited. This also applies to parts of this technical documentation.

Release Notes **VC-8000 Machinery Protection System MPS 2019 SP1**, S1088790.002 / V04, en,
date of issue: 05.02.2021

Brüel & Kjær Vibro GmbH

Leydheckerstrasse. 10
64293 Darmstadt
Germany

Phone: +49 6151 428 0
Fax: +49 6151 428 1000

Hotline

Phone: +49 6151 428 1400
E-Mail: support@bkvibro.com

Brüel & Kjær Vibro A/S

Skodsborgvej 307 B
2850 Nærum
Denmark

Phone: +45 77 41 25 00
Fax: +45 45 80 29 37

Homepage

www.bkvibro.com

BK Vibro America Inc.

1100 Mark Circle
Gardnerville NV 89410
USA

Phone: +1 (775) 552 3110

Corporate E-Mail

info@bkvibro.com

Contents

1	MPS 2019 SP1	4
1.1	UMM Firmware (v1: 7.03.9013; v2: 7.03.9013)	4
1.2	TMM Firmware (v1: 7.01.9012; v2: 7.01.9014)	4
1.3	SAM Firmware (7.03.9019)	4
1.4	MPS Software (7.03.52 EN, 7.03.53 RU)	4
2	MPS 2019	6
2.1	UMM Firmware (v1: 7.01.9068; v2: 7.01.9064)	6
2.2	TMM Firmware (v1: 7.01.9012; v2: 7.01.9014)	6
2.3	SAM Firmware (7.01.9064)	6
2.4	MPS Software (7.0.791 EN, 7.0.792 RU)	6
3	MPS 2018 SP1	7
3.1	Setup And Maintenance Software (6.50.48 EN, 6.50.49 RU)	7
3.2	UMM Firmware (6.50.9012)	7
3.3	TMM Firmware (6.50.9005)	7
3.4	SAM Firmware (6.50.9003)	7
4	MPS 2018	8
4.1	MPS Remote Access	8
4.2	Bypass Votes True	9
4.3	Rack Information	9
4.4	MPS Large Value Display	10
4.5	Air Gap Channel	11
4.6	Defects and Enhancements	12



1 MPS 2019 SP1

1.1 UMM Firmware (v1: 7.03.9013; v2: 7.03.9013)

The following enhancements have been made to UMM firmware:

- (New) Support for the Max X/Y measurement for Velocity, Acceleration and RV channels.

1.2 TMM Firmware (v1: 7.01.9012; v2: 7.01.9014)

- No enhancements.

1.3 SAM Firmware (7.03.9019)

The following enhancements have been made to SAM firmware:

- (New) Support for the Max X/Y measurement for Velocity, Acceleration and RV channels.

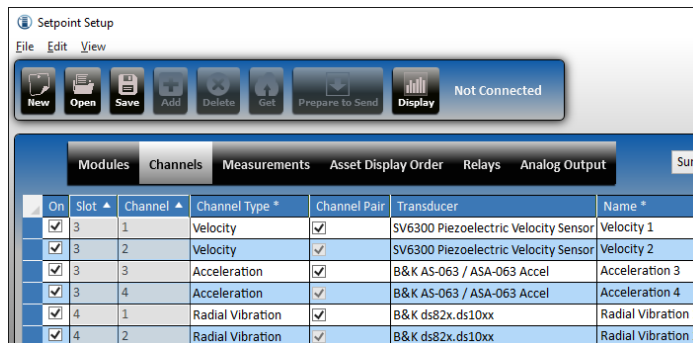
1.4 MPS Software (7.03.52 EN, 7.03.53 RU)

The following enhancements have been made to MPS software:

- (New) Explicit X/Y Channel Pairs for Acceleration, Velocity, and Radial Vibration channels.

This release introduces a new Channel Pairing feature that provides support for explicit channel pairs allowing the ability to pair the channel types: Radial Vibration, Diagnostics Proximity, Velocity, Diagnostics Velocity, Acceleration & Diagnostics Acceleration. The explicit pairing is provided through a new Channel Pair column in the Channels-Summary view in MPS. Channels 1,2 & 3,4 can be paired.

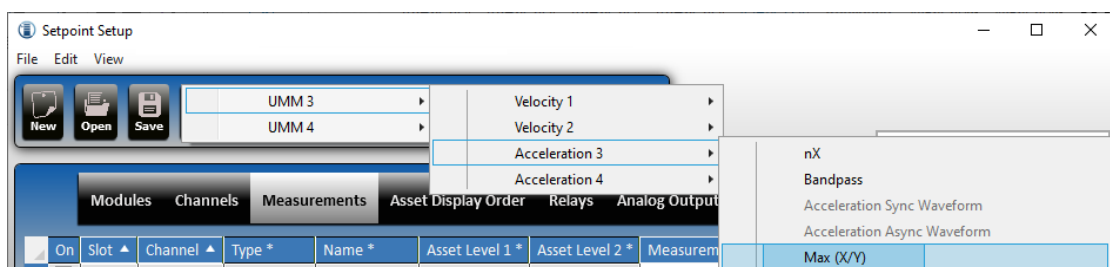
Explicit pairs for Velocity and Acceleration and any other pair not otherwise having matching Phase Triggers will not produce orbits in CMS. Support for orbits in CMS will be provided for these scenarios in future releases for versions greater than 7.5.



On	Slot	Channel	Channel Type *	Channel Pair	Transducer	Name *
<input checked="" type="checkbox"/>	3	1	Velocity	<input checked="" type="checkbox"/>	SV6300 Piezoelectric Velocity Sensor	Velocity 1
<input checked="" type="checkbox"/>	3	2	Velocity	<input checked="" type="checkbox"/>	SV6300 Piezoelectric Velocity Sensor	Velocity 2
<input checked="" type="checkbox"/>	3	3	Acceleration	<input checked="" type="checkbox"/>	B&K AS-063 / ASA-063 Accel	Acceleration 3
<input checked="" type="checkbox"/>	3	4	Acceleration	<input checked="" type="checkbox"/>	B&K AS-063 / ASA-063 Accel	Acceleration 4
<input checked="" type="checkbox"/>	4	1	Radial Vibration	<input checked="" type="checkbox"/>	B&K ds82x.ds10xx	Radial Vibration 1
<input checked="" type="checkbox"/>	4	2	Radial Vibration	<input checked="" type="checkbox"/>	B&K ds82x.ds10xx	Radial Vibration 2

- (New) Max X/Y measurement for Acceleration, Velocity and Radial Vibration channel pairs.

This release introduces a new Max X/Y measurement. This measurement is a dual channel measurement that reports the maximum value from the two possible input channels. This measurement can drive a 4-20mA output and is reported via MODBUS. The Max X/Y is an addable measurement. For any channel pairs that exists, channels 1 or 3 may be used from this pair to add the addable Max X/Y measurement to the channel. The measurement will report the maximum value from the two paired channels.



- (Recommended for all users) Resolve failures when configuring Recip Impact properties.
- (Recommended for all users) Resolve formatting issues with the CMS Navigation Path.
- (Recommended for all users) Resolve missing module names in rack displays.
- (Recommended for all users) Resolve situation where HD is enabled without a view password.
- (Recommended for all users) Resolve failures with duplicate Asset Display Order entries.
- (Recommended for all users) Resolve missing Asset Display Order entries.
- (Recommended for all users) Resolve incorrect default Hydro RV alarm type defaults.
- (Recommended for all users) Prevent the Front Panel display from going into sleep mode.
- (Recommended for all users) Prevent locking the screen when progress dialogs are visible.
- (Recommended for all users) Prevent invalid configurations for Analog Output measurements.
- (Recommended for all users) Improve Tachometer stability for multiple EPR at high frequency.



Note:

Rv with Smax must be added to channels 1,2 or 3,4. Attempts to add this channel type in any other configuration may produce unexpected results and should be avoided.



2 MPS 2019

2.1 UMM Firmware (v1: 7.01.9068; v2: 7.01.9064)

The following enhancements have been made to UMM firmware:

- (New) Support for waveforms up to 32,768 samples.

2.2 TMM Firmware (v1: 7.01.9012; v2: 7.01.9014)

- No enhancements.

2.3 SAM Firmware (7.01.9064)

The following enhancements have been made to SAM firmware:

- (New) Support for waveforms up to 32,768 samples.
- (Recommended for all users) Performance improvements to prevent loss of condition monitoring data when using fully loaded racks.
- (Recommended for all flight recorder users) resolve defect with CMS client connection retrieving data from SD instead of HD.
- (Recommended for all ESAM users) Resolve issue with display not connecting to rack.

2.4 MPS Software (7.0.791 EN, 7.0.792 RU)

The following enhancements have been made to MPS software:

- (New) Support for waveforms up to 32,768 samples.
- (New) Phase measurements available for hydro radial vibration and hydro velocity channels.
- (Recommended for all users) Resolve various issues with configuration send failing.
- (Recommended for all users) Resolve failures while applying rack capabilities upgrade key.
- (Recommended for all users) Resolve software crash when editing channel properties.
- Allow m/s^2 for peak stretch measurements.

3 MPS 2018 SP1

This release resolves key customer defects and enhancements.

3.1 Setup And Maintenance Software (6.50.48 EN, 6.50.49 RU)

The following changes have been made for this release:

- Support for 4 channels of hydro radial vibration, and hydro velocity on a given monitor.
- Remove 1000 Hz limitation when events per revolution is not 1.
- 512 or 1024 samples per revolution for reciprocating applications.
- Support orbits for hydro radial vibration channels.
- Fix to support all necessary units for air gap channels.
- Fix to allow mix of single and double acting cylinders for reciprocating compressors channels.

3.2 UMM Firmware (6.50.9012)

The following changes have been made for this release:

- Support orbits for hydro radial vibration channels.
- Better filtering for DC noise at low RPM for SMAX measurements.
- Fix for configuration changes and firmware upgrades not always persisting in flash.

3.3 TMM Firmware (6.50.9005)

The following changes have been made for this release:

- Fix for configuration changes and firmware upgrades not always persisting in flash.

3.4 SAM Firmware (6.50.9003)

The following changes have been made for this release:

- Resolve issues with remote configuration changes not updating clients.
- Prevent spurious front panel display reboots while configuration is being changed.



4 MPS 2018

4.1 MPS Remote Access

Remote Access allows MPS clients to connect to a Setpoint MPS rack over the Ethernet. In order to successfully connect the rack has to be ordered with MPS remote access, have an administration password, and have remote MPS access enabled.

Two levels of access are available to the rack: Administrator, and Remote User Access. Each account has its own password. If a password is blank the account is disabled and users are given a warning when sending a configuration change to the rack.

When connected via Remote User Access the user is unable to remotely send configurations, update firmware, enable channel bypass, reboot the SAM, enable hardware features, or set time. They can acknowledge events, and force boost data collection. NOTE: Remote User Access account will also be used to provide CMS client access to HD data.

When connected with the Administrator account the user may access all capabilities of the setup and maintenance software except for enabling hardware features.

When connecting to a previously used rack the rack name is presented in addition to the IP address.

Connections are made through the Setup application's file menu. Recently used connections are listed with the rack name to allow for easy re-connection to racks.

When connected to a rack the rack name is displayed on the screen for reference.

A capability on the info screen should identify SAM modules that are capable or enabled for remote access.

TCP Port 8004 provides remote MPS access.

Window Communication Foundation (WCF) is used to provide transport security and windows authentication. This is suitable for an intranet environment.

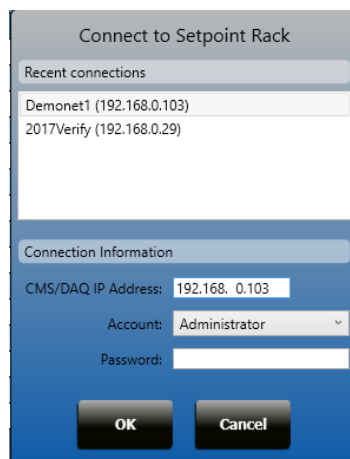


Figure 4-1) Remote Access Connection Dialog

4.2 Bypass Votes True

Channel Boolean logic blocks now allow bypass to vote true. This allows bypassed channels to be removed from logic, such that and logic may still vote true.

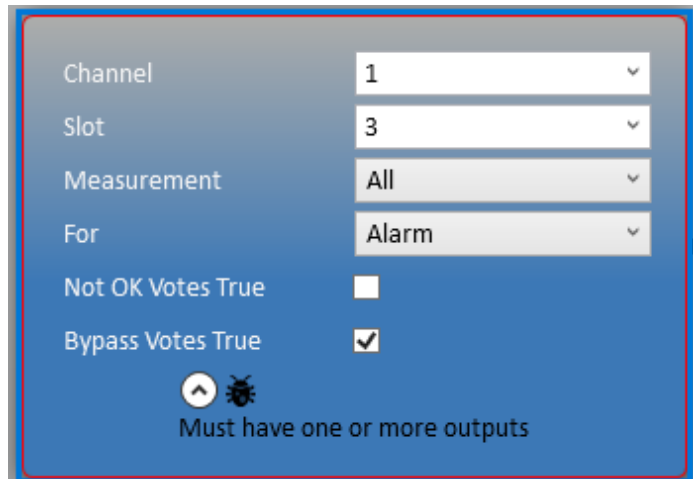


Figure 4-2) Bypass Votes True

4.3 Rack Information

CMS, HD, and SD statuses have pop up displays with additional information about each status including remaining storage capacity, network bandwidth, and more.





4.4 MPS Large Value Display

The rack front panel display has been enhanced to show large values that can be seen from a greater distance from the rack. This allows replacement of external tachometer displays for some customers.



4.5 Air Gap Channel

Air gap monitoring is now available refer to the hydro Solutions manual (S000004001) for more information.

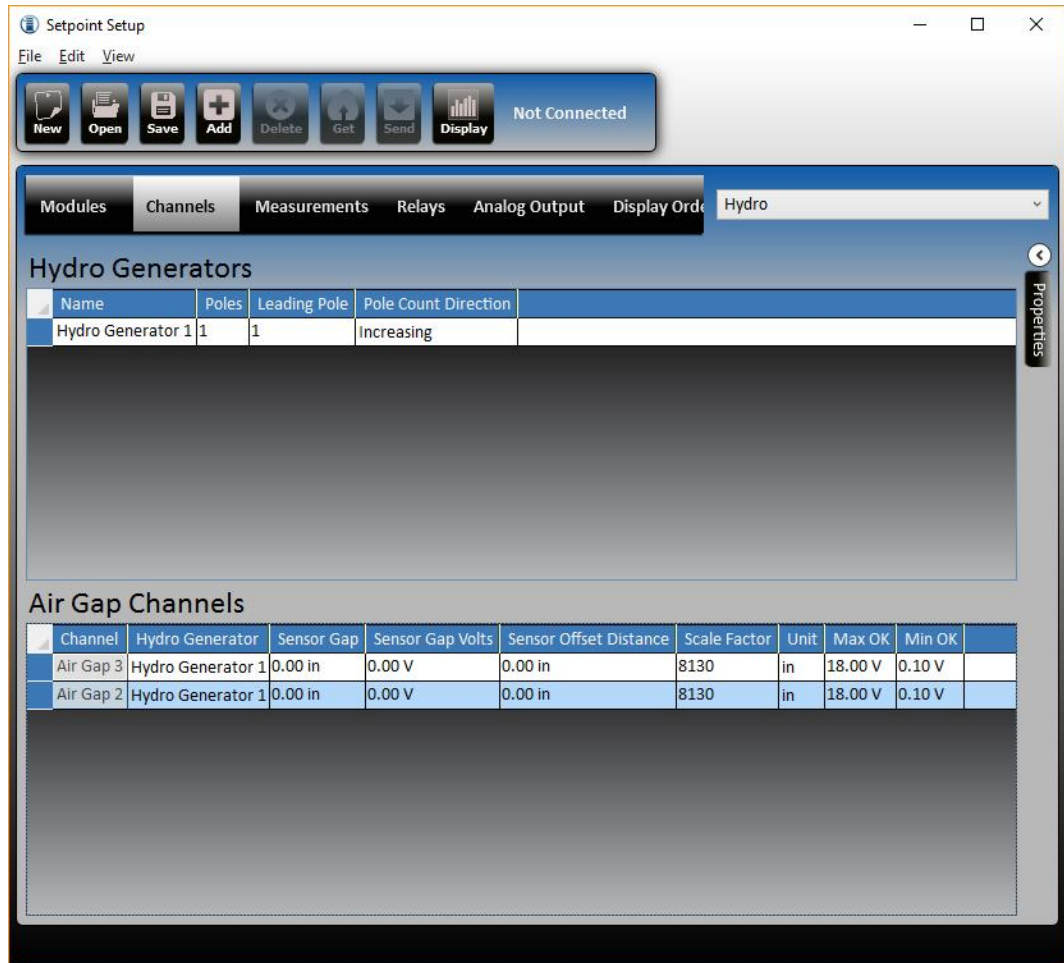


Figure 4-3) Air Gap Configuration



4.6 Defects and Enhancements

The following defect fixes and enhances have been made for MPS:

- A new channel (Tracking REB Acceleration) may provide REB fault frequency measurements
- A new channel that can provide SMAX measurements
- A list of 3 diagnostic channels optimized for portable data collection have been added to MPS
- Adaptive Inness has been fixed to properly handle various error conditions that can drive excessive data collection.
- MPS setup can save a configuration as a simulator file.
- Issue with hardware info screen not always loading has been fixed
- Ability to remove a channel from a collection group
- No Pulses, and Triggering error statuses are now displayed on the front panel display
- CMS File may be replayed as a simulator to drive realistic data into a PI System for demonstration and test purposes
- Dynamic Collection Percent threshold is now used as minimum threshold when using adaptive Inness
- V2.50 SAM could not be configured with previous release, but may now be configured
- Some Voltage values were not showing on pop up display



Contact

Brüel & Kjær Vibro GmbH

Leydheckerstrasse 10
64293 Darmstadt
Germany

Phone: +49 6151 428 0
Fax: +49 6151 428 1000

Corporate E-Mail: info@bkvibro.com

Brüel & Kjær Vibro A/S

Skodsborgvej 307 B
2850 Nærum
Denmark

Phone: +45 77 41 25 00
Fax: +45 45 80 29 37

Homepage: www.bkvibro.com

BK Vibro America Inc.

1100 Mark Circle
Gardnerville NV 89410
USA

Phone: +1 (775) 552 3110