



Product Sheet

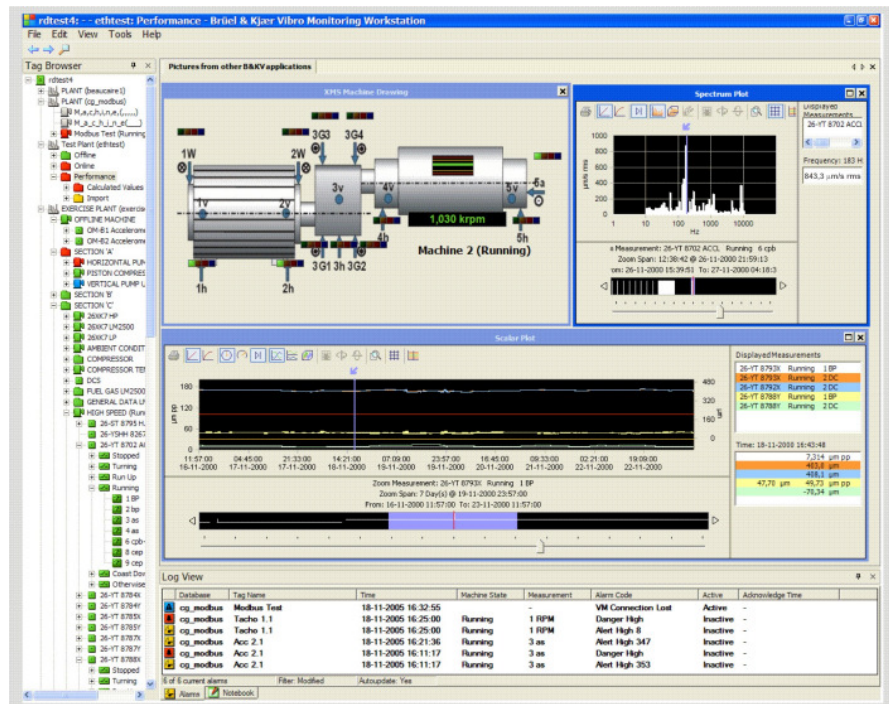
VC-6000™/Compass 6000 – Monitoring Software Packages Overview

The Compass 6000 family of monitoring software includes the **Monitoring Workstation** software and the **Type 3160** “building-block” application modules for the Compass 6000 condition and performance monitoring system. The same versatile Windows-based user interface is also used in the setup and display software for the VC-6000™ safety system and in the upgrade software package for the user-interface of the Type 3540 COMPASS Classic monitoring system.

The VC-6000™/Compass 6000 family of monitoring software provides monitoring capability to a range of Brüel & Kjær Vibro systems.

VC-6000™

The **Type 7126 Setup and Display Software** is designed specifically for the VC-6000™ safety system. Based on the same user-interface as for the Compass 6000, it is used for setting up the safety system. It may also be used in a control room environment for displaying the latest measurements, acknowledging alarms and resetting relays. When testing a machine - for example for baseline recording during commissioning - all measurements during a user-defined period can be recorded in a file. The data can later be displayed and analyzed using a spreadsheet program.



Type 3540 COMPASS Classic

The **Type 7122 Monitoring Workstation** is the Windows-based, web-enabled user-interface software that is used with the Unix-based COMPASS Classic system. It is the same user-interface used in the Compass 6000, so it is easy-to-use and is flexible. The **UPG-3540 Upgrade** family of software includes this software plus can also include new factory-configured servers and an installation service.

Compass 6000

Compass 6000 is Brüel & Kjær Vibro's condition and performance monitoring system using the VC-6000™ monitoring modules for data acquisition. The Compass 6000 uses the Windows-based, web-enabled **Type 7123 Monitoring Workstation** software, which includes the database, server platform and user-interface software. It is a native client/server using Microsoft .NET technology with an Oracle database. Several databases can be accessed and data simultaneously displayed for correlation purposes.

Product Sheet – Monitoring Software Packages

The **Type 3160 Monitoring Software** is a series of application modules that are added to the basic Type 7123 Monitoring Workstation software and offer various levels of condition monitoring functionality that can be used singly or combined to fit the user's application:

- **Type 3160-00 Rack-based License** – For acquiring data from the VC-6000™ for condition monitoring purposes.
- **Type 3160-01 Detection and Trending Software** – All primary measurements from the VC-6000 monitoring modules can be monitored to machine states and saved using this software. Calculated measurements using scalar values as variables can also be made for advanced trending of the machines condition. Automatic, reliable, early fault detection can be done with the Constant Percentage Bandwidth (CPB) measurement and user-defined bandpass measurements.
- **Type 3160-02 Diagnostic Software** – Advanced diagnosis and analysis measurements and plots are provided for reliable predictive monitoring capability
- **Type 3160-03 Performance Monitoring Software** – Machine condition and performance can be monitored using accurately calculated thermodynamic parameters
- **Type 3160-04 Advisory Software** – Neural-network based diagnostic advisory software automatically scans the database for symptoms that indicate a developing fault at an early stage.

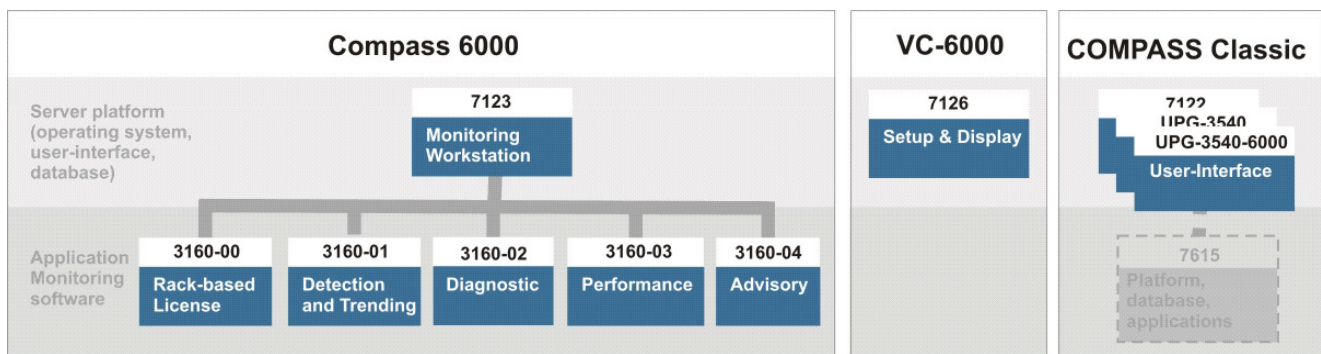


Fig. 1 Overview of VC-6000™/Compass 6000 software

Brüel & Kjær Vibro reserves the right to change specifications without notice.

Brüel & Kjær Vibro A/S
 2850 Nærum – Denmark
 Tel.: +45 7741 2500
 Fax: +45 4580 2937
 E-mail: info@bkvibro.com

Brüel & Kjær Vibro GmbH
 64293 Darmstadt – Germany
 Tel.: +49 (0) 6151 428 1100
 Fax: +49 (0) 6151 428 1200
 E-mail: info@bkvibro.de