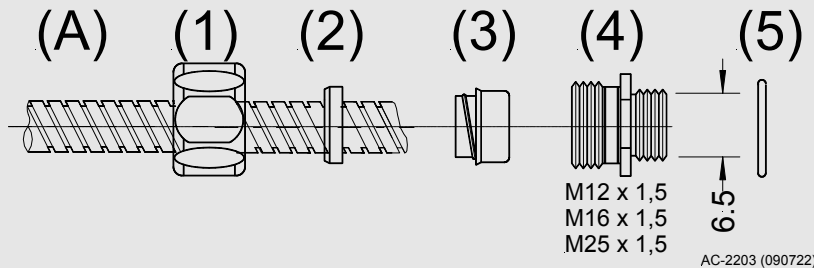




AC – 2203

Montage - Mounting - Montage



AC-2203/12/16/25 Schlauchverschraubung

Lieferumfang:

- (1) Druckmutter
- (2) Druckring, Kunststoff
-40°C ... +100°C
Druckring, Messing
-40°C ... +200°C
- (3) Innentülle, Ø I : 6,5 mm;
-40°C ... +100°C
Innentülle, Ø I : 7,0 mm;
-40°C ... +200°C
- (4) Verschraubungsgehäuse
- (5) Dichtring
- (A) Metallschutzschlauch
(gehört nicht zum Lieferumfang
des AC-2203/xx)

AC-2204/12 Metallschutzschlauch mit
Edelstahl
Ø I x Ø A: 8 x 10 mm;
-40°C ... +200°C
dazu Druckring (2) aus Messing
Innentülle (3) Ø 7,0 mm

AC-2204/16 Metallschutzschlauch mit
Edelstahl
Ø I x Ø A: 14 x 17 mm;
-40°C ... +200°C
dazu Druckring (2) aus Messing
Innentülle (3) Ø 12,5 mm

AC-2204/25 Metallschutzschlauch mit
Edelstahl
Ø I x Ø A: 25 x 27 mm;
-40°C ... +200°C
dazu Druckring (2) aus Messing
Innentülle (3) Ø 21,0 mm

Gewicht ca. 100g

AC-2203/12/16/25 Metal screwed hose connection

Delivery items:

- (1) Pressing nut
- (2) Plastics thrust collar
-40°C ... +100°C
Thrust collar of brass
-40°C ... +200°C
- (3) Inner mouthpiece, Ø I : 6,5mm;
-40°C ... +100°C
Inner mouthpiece, Ø I : 7,0mm;
-40°C ... +200°C
- (4) Connector body
- (5) Sealing
- (A) Protective metal hose
(not part of the delivery item
of AC-2203/xx)

AC-2204/12 Protective metal hose
from stainless steel
Ø I x Ø A: 8 x 10 mm;
-40°C ... +200°C
with thrust collar of brass (2)
Inner mouthpiece (3) Ø 7,0 mm

AC-2204/16 Protective metal hose
from stainless steel
Ø I x Ø A: 14 x 17 mm;
-40°C ... +200°C
with thrust collar of brass (2)
Inner mouthpiece (3) Ø 12,5 mm

AC-2204/25 Protective metal hose
from stainless steel
Ø I x Ø A: 25 x 27 mm;
-40°C ... +200°C
with thrust collar of brass (2)
Inner mouthpiece (3) Ø 21,0 mm

Weight approx. 100 g

AC-2203/12/26/25 Raccord pour gaine

Etendue de la livraison:

- (1) Ecrou de serrage
- (2) Joint plastique
-40 °C ... +100°C
Joint laiton
-40°C ... +200°C
- (3) Douille interne, Ø I : 6,5 mm;
-40°C ... +100°C
Douille interne, Ø I : 7,0 mm;
-40°C ... +200°C
- (4) Embout de serrage
- (5) Joint d'étanchéité
- (A) Gaine métallique
(ne fait pas partie de l'étendue
de livraison du AC-2203/xx)

AC-2204/12 Gaine métallique
inoxydable
Ø I x Ø A: 8 x 10 mm;
-40°C ... +200°C
et compris joint (2) en plastique
douille interne (3) Ø 7,0 mm

AC-2204/16 Gaine métallique
inoxydable
Ø I x Ø A: 14 x 17 mm;
-40°C ... +200°C
et compris joint (2) en plastique
douille interne (3) Ø 12,5 mm

AC-2204/25 Gaine métallique
inoxydable
Ø I x Ø A: 25 x 27 mm;
-40°C ... +200°C
et compris joint (2) en plastique
douille interne (3) Ø 21,0 mm

Poids env. 100 g