

... gives added power

Compass 6000 Monitoring Workstation enhances the overall performance of the already successful COMPASS system. This Windows™ based user interface has been developed in close cooperation with end-users to meet the ever-increasing demands for effective machine health management. It provides flexibility and versatility to both experienced monitoring specialists and control room operators with little or no vibration analysis expertise.



We are offering a complete package - not just the most recent version of our newest monitoring software. It includes a factory sent, pre-configured monitoring system server and complete installation service.

Compass 6000 Monitoring Workstation

This user-interface software retrieves measurement data and alarm information from one or more monitoring databases on the COMPASS server. It displays the results on your Windows computer.

As it is 100% web enabled, users can get information and data by Internet from anywhere in the world.

It combines the design standards used in distributed control systems, the ease and flexibility of Microsoft Explorer, together with our advanced vibration monitoring tools. The result is a user interface that is effective, fast and intuitive to learn and use.

This is what you get

Easy navigation

It is easier to browse through your machines, and measurement points. Drag 'n' drop one or more measurement points, machines or entire plants into the alarm view to see relevant alarms. Or drop them into the measurement view to see the relevant plots.

Machine	Health Name	Machine State	Alarm	Alarm Code	Action	Acknowledge Time
allread	M1 Rad Axis 3.1	2:17:54 PM	Coast Down	9 XDMA /P	Alert High	Active
allread	M1 Rad Axis 3.3	2:17:54 PM	Coast Down	9 XDMA /P	Alert High	Active
allread	M1 Rad Axis 3.1	2/29/2004 2:17:33 PM	Coast Down	9 XDMA /P	Strange Low	Inactive
allread	M1 Rad Axis 3.3	2/29/2004 2:17:25 PM	Coast Down	9 XDMA /P	Alert Low	Inactive
allread	M1 Rad Axis 3.1	2/29/2004 2:16:00 PM	Coast Down	9 XDMA /P	Alert High	Inactive
allread	M2 Rad Rad Dial 4.1	2/29/2004 2:16:00 PM	Running	4 XDMA	Alert High 1	Active
allread	Ironen-cardinate	2/29/2004 2:15:58 PM	Running	4 on (rotate)	Urgen High	Active
allread	M2 Rad Rad Dial 4.1	2/29/2004 2:15:08 PM	Running	12 ac	Alert Low 1 P	Active

Alarm view list

Effective management of alarms

The alarm view concept used in the Workstation has been developed together with end-users in the nuclear and petrochemical industries. Special consideration has been made for control room operators and maintenance staff. Alarms display can be user-customized to show only the desired types of alarms for the specified machines, measurement points or the entire plant. Double-click a specific alarm to open up the related measurement plot.

Languages

Workstation is available in English, French, German, Portuguese and Russian.

At-a-glance overview

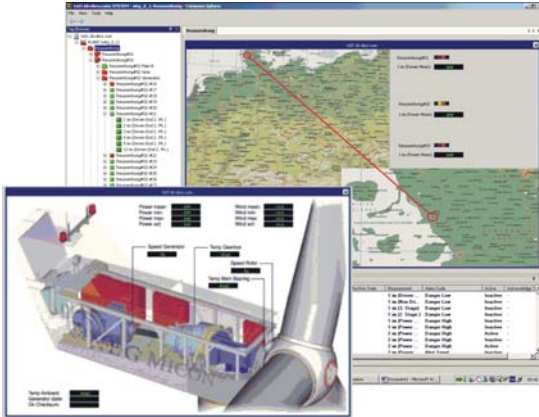
Data view objects simplify the task of getting a quick status on the condition of your machines. Measurement history icons (1 or 24 hour history), spectrum icons, bar graphs, digital read-outs and alarm traffic lights can be easily added to machine drawings.

Photographs can also be used in the background. Since COMPASS machine drawings from your existing system are used as default, your upgrade is up and running in a short time.

Bar graph

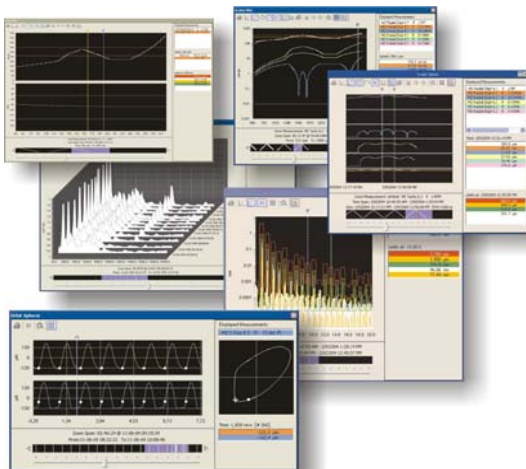
Traffic Light Alarms

You can set up one or more machine view windows for the entire plant, for each machine or even for each measurement point. Users who work with the classic COMPASS "Custom View" will find more flexibility and versatility with these Machine views!



Plots for better, faster diagnoses

All the plots can be sized to fit the workspace window or to fill the entire screen. It is easy to correlate plots from different machines, different databases or even from different historical time periods. This reduces the time it takes to analyze and diagnose faults.



The upgrade includes an installation service and a new server

Our highly skilled technicians will typically get your Compass 6000 system upgrade up and running on a new server within two days. The upgrade is a turnkey package. It does not require time or resources from you, nor will it result in any monitoring system downtime or lost data.

Ordering code for the package is **UPG-3540** and it includes:

- Compass Monitoring Workstation software Type 7122
- Pre-configured server sent from the factory
- On-site installation and system re-commissioning

Call your Sales representative or email us today. We can explain about the specific terms and conditions of how your particular COMPASS system can be upgraded with the Compass 6000 Monitoring Workstation.

Brüel & Kjær Vibro A/S
2850 Nærum – Denmark
Tel.: +45 7741 2500
Fax: +45 4580 2937
E-mail: info@bkvibro.com

Brüel & Kjær Vibro GmbH
64293 Darmstadt – Germany
Tel.: +49 (0) 6151 428 1100
Fax: +49 (0) 6151 428 1200
E-mail: info@bkvibro.de

www.bkvibro.com



Brüel & Kjær Vibro

New COMPASS User-Interface



Upgrade Package:

- Windows™ user interface
- New monitoring system server
- Installation service